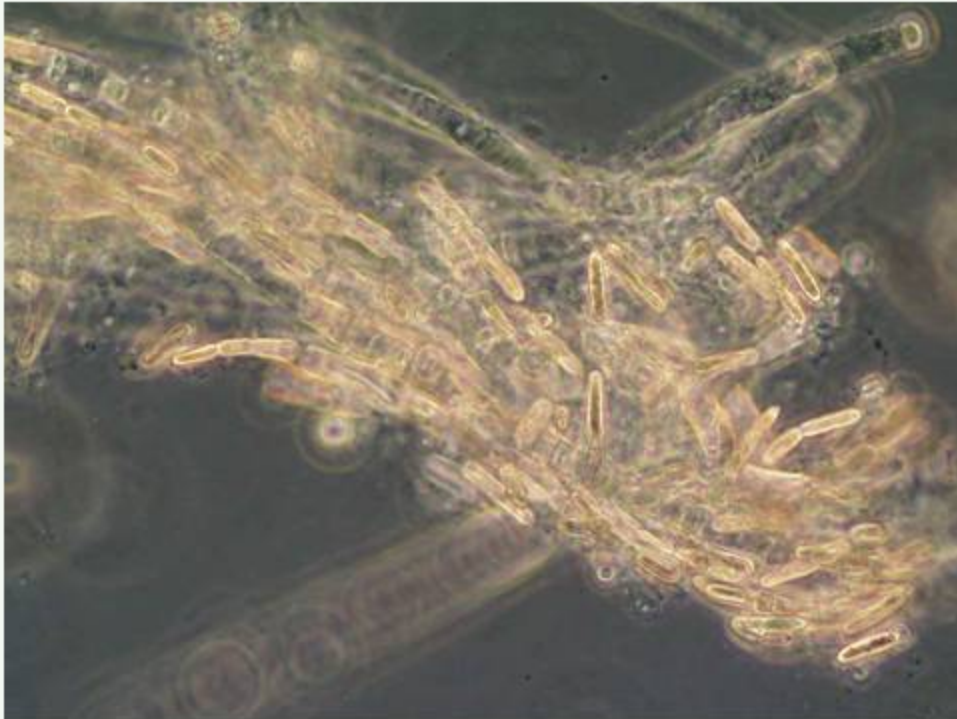


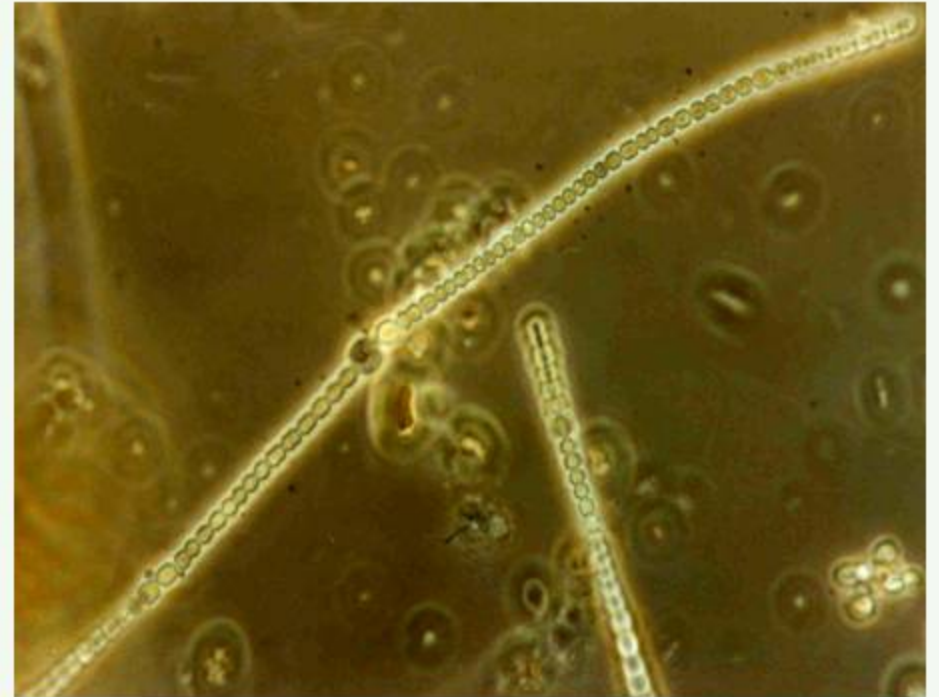
phytoplankton - cyanophyceae

Anabaena sp.

abundance: summer, late summer
life-form: in long filaments
cell diameter: 4 - 6 μm



LM (Gotland Sea, sediment trap)



LM (Kiel Bight)

phytoplankton – cyanophyceae

Anabaenopsis elenkinii

life-form: in filaments

cell-length:	vegetativ cell 3 - 9(12,9)µm	akinet 8,1 - 16,8µm	heterocyt diameter: 2,8 - 7µm
cell-width:	2,8 - 7,5µm	7,6 - 14,8µm	



LM (Oder Bight)

phytoplankton - cyanophyceae

Aphanizomenon gracile

abundance: summer, late summer
life-form: in long filaments
cell diameter: (2)2,6 – 3,7 μ m



LM (Oder Bight)

phytoplankton - cyanophyceae

Aphanizomenon sp.

abundance: summer, late summer
life-form: in long filaments
cell diameter: 2 – 5 μm



LM (Gotland Sea, sediment trap)



LM (Arkona Sea)

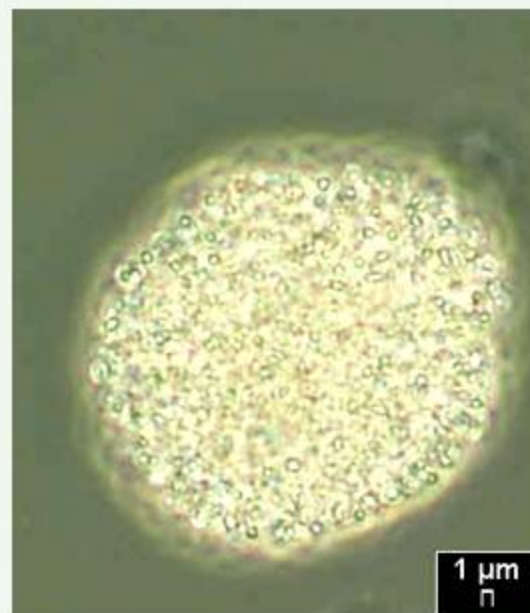
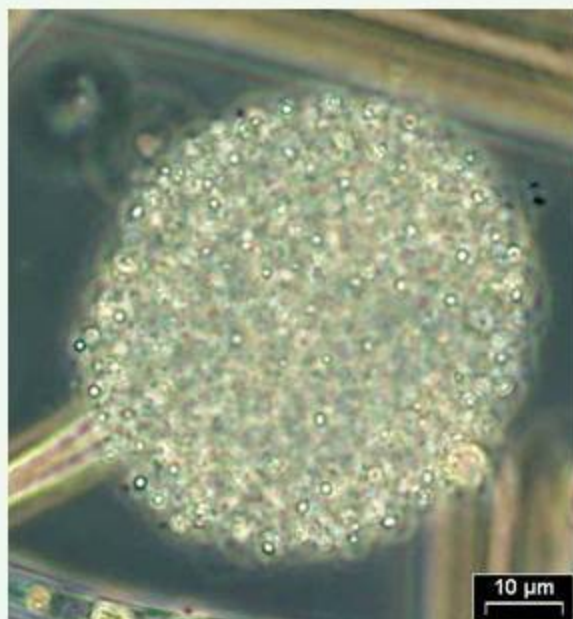


LM (Oder Bight)

phytoplankton - cyanophyceae

Aphanocapsa delicatissima

abundance: spring, summer, autumn
life-form: in colonies up to 50 μ m in diameter
cell diameter: 0,5 – 0,8 (1,2) μ m



LM (Oder Bight)

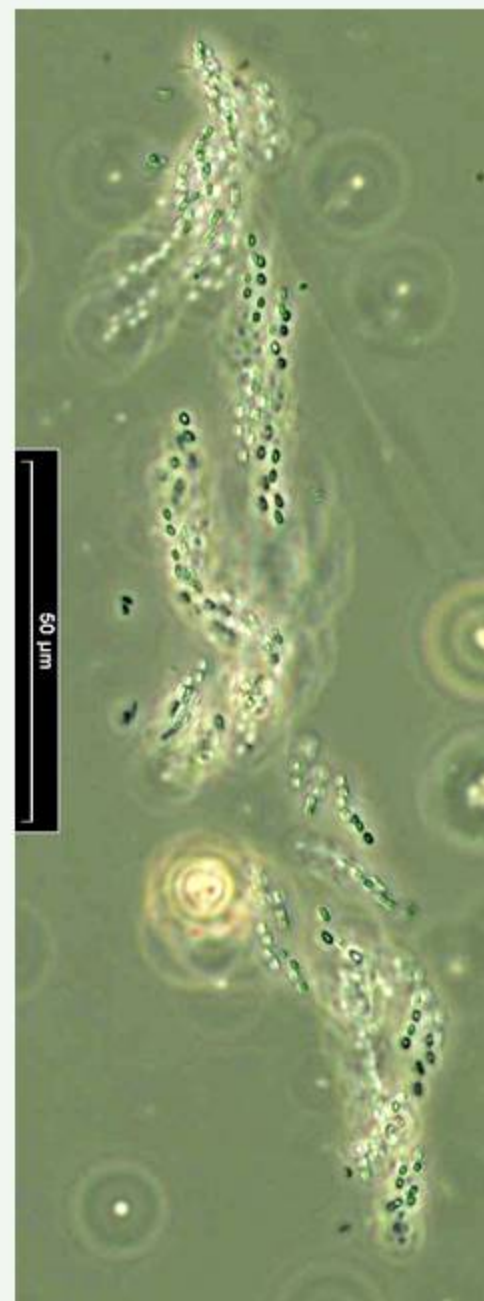
phytoplankton - cyanophyceae

Aphanothece paralleliformis

abundance: summer, late summer
life-form: in colonies
cell size: 2,5 - 4 x 1µm



LM (Gotland Sea, sediment trap)

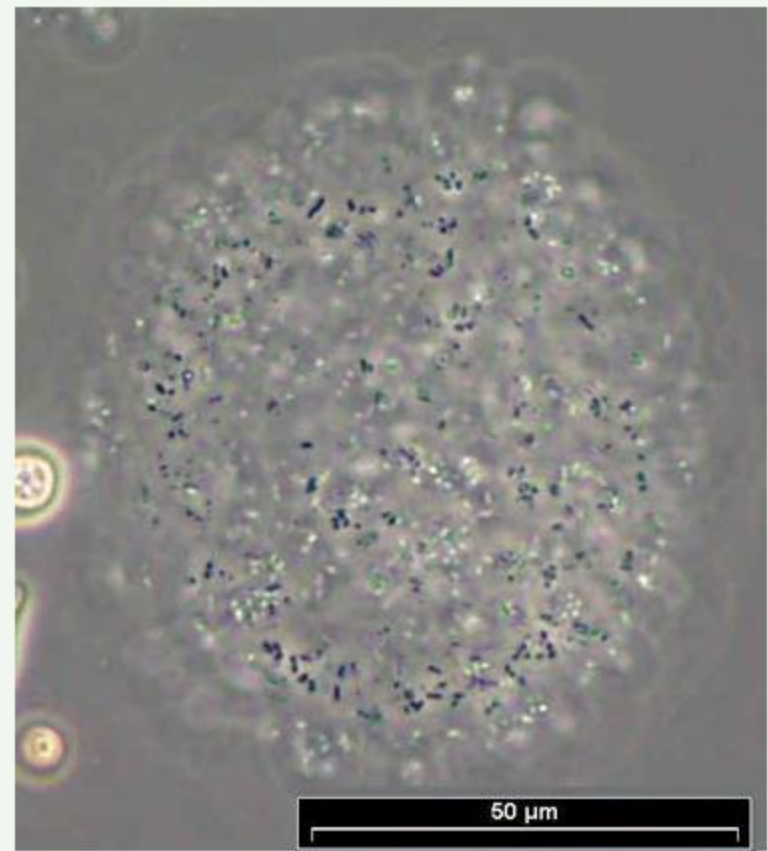
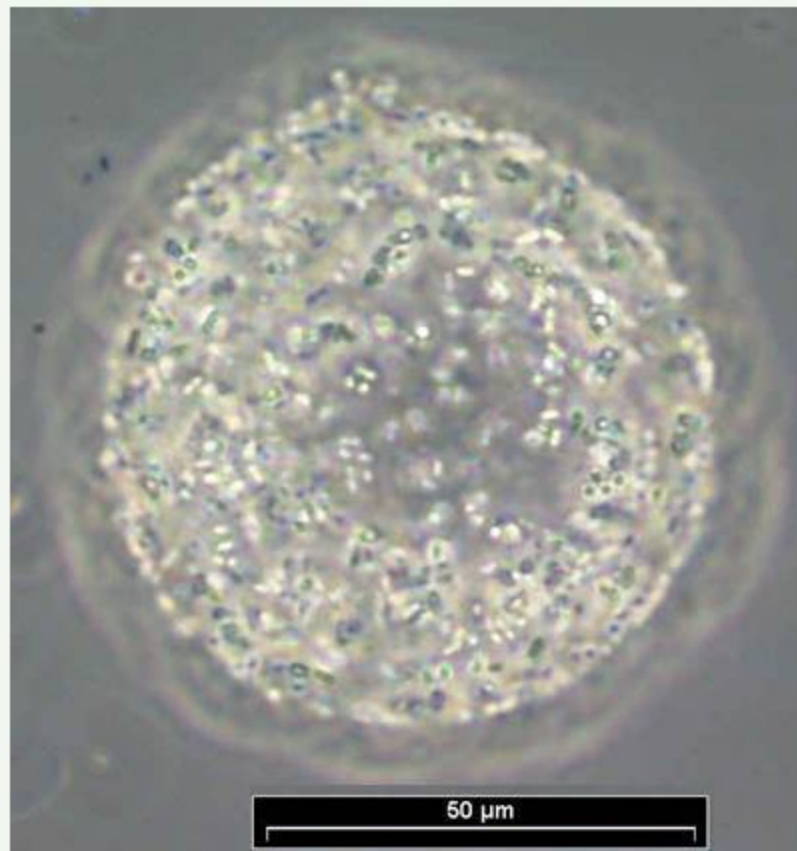


LM (coastal station Heiligendamm)

phytoplankton - cyanophyceae

Coelosphaerium minutissimum

abundance: summer, late summer
life-form: in colonies
cell-size: 0,8 - 1,2 μm

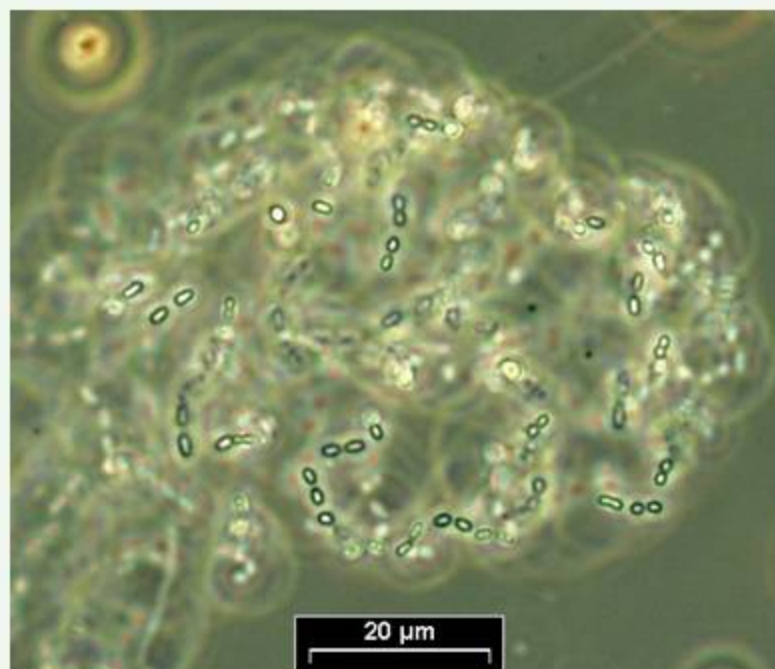


LM (Gotland Sea, sediment trap)

phytoplankton - cyanophyceae

Cyanodictyon planctonicum

abundance: mainly in the warm season of the year
life-form: net-like colonies, $< 150 \mu\text{m}$
cell size: $0,5 - 1,2 \times 1 - 2,5 \mu\text{m}$

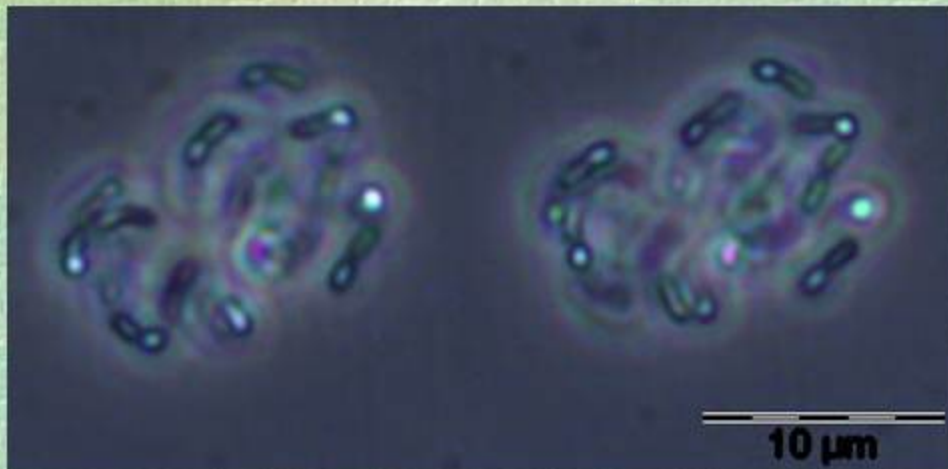


LM (coastal station Heiligendamm)

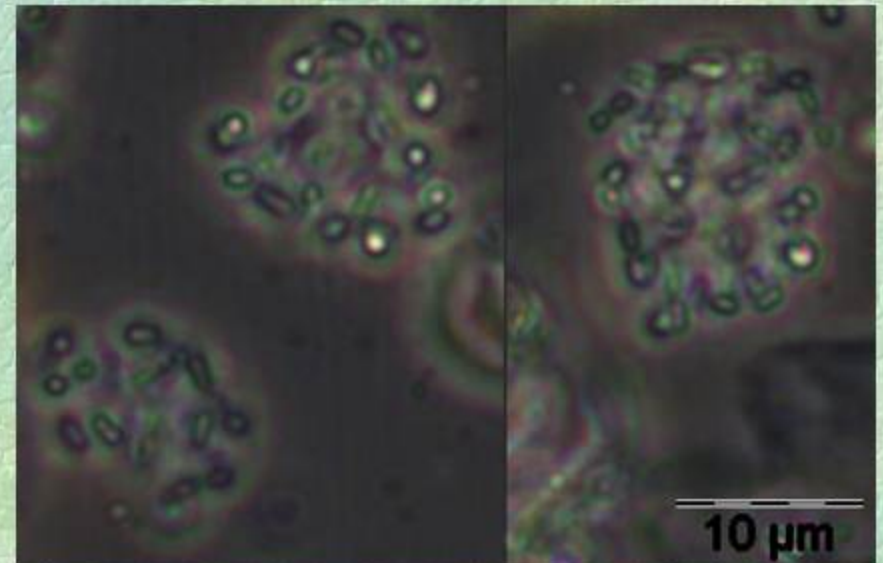
phytoplankton - cyanophyceae

Cyanonephron styloides

abundance: mainly in the warm season of the year
life-form: spherical to ellipsoidal colonies with kidney-shaped cells sitting on stalks
cell-size: 0.8-1.2 x 2,3-4.5 μm



LM (Arkona Sea)



LM (coastal station Heiligendamm)

phytoplankton - cyanophyceae

Lemmermanniella pallida

abundance: mainly in the warm season of the year
life-form: spherical colonies, with cells beneath the surface
cell size: 0,5 - 1,6 x (0,7) 1,1 - 3,7 (4,3)µm



LM (coastal station Heiligendamm)

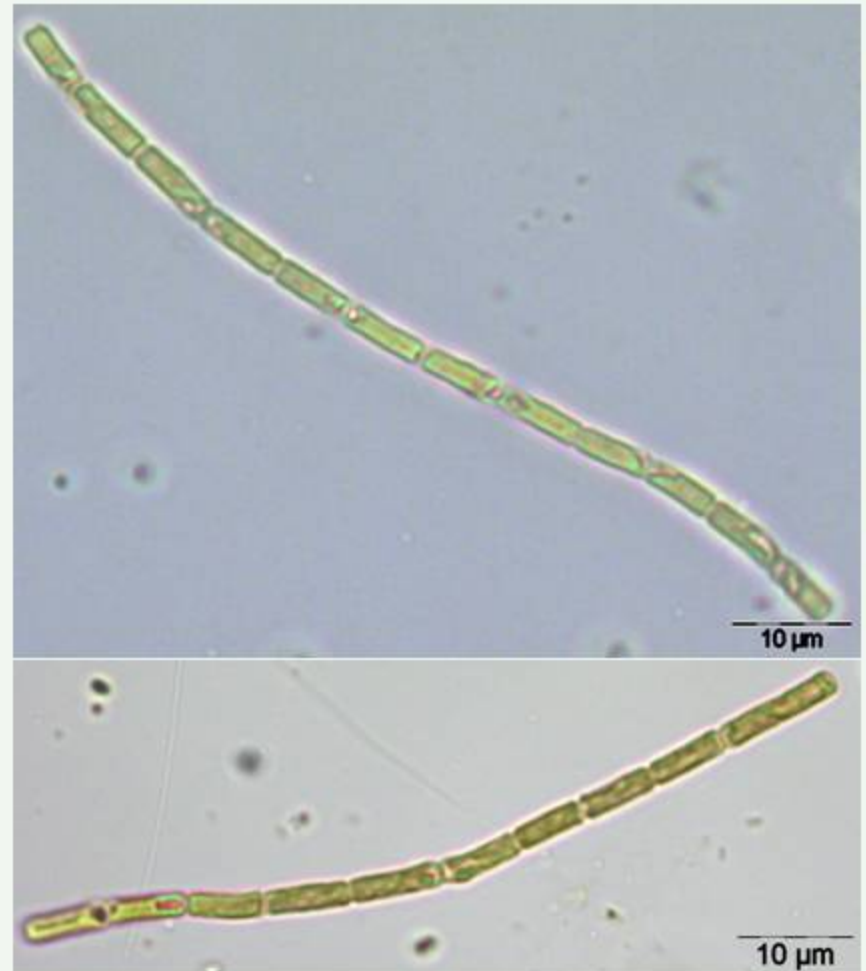
phytoplankton – cyanophyceae

Limnothrix redekei

abundance: summer, late summer

life-form: in filaments

Cell-size: mostly 1,2 - 2,2 μm x mostly 8 - 14 μm

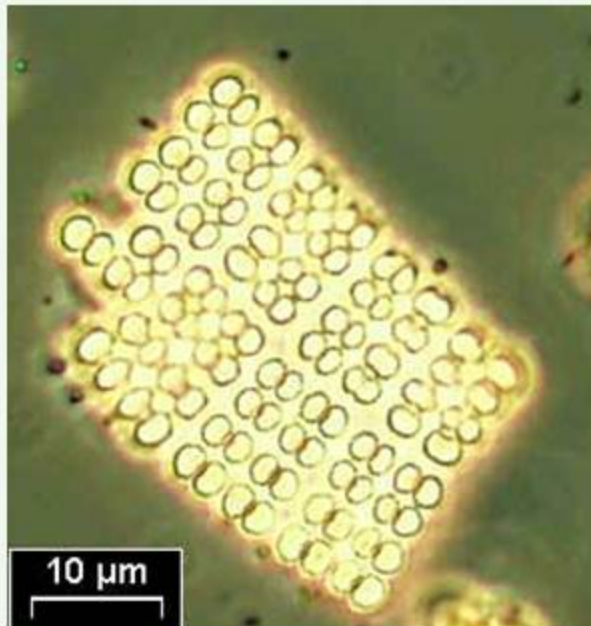


LM (Oder Bight)

phytoplankton - cyanophyceae

Merismopedia punctata

abundance: particularly in the warm season of the year
life-form: in colonies up to 64 cells
cell diameter: (2) 2,5 – 3,6 (4?) μm

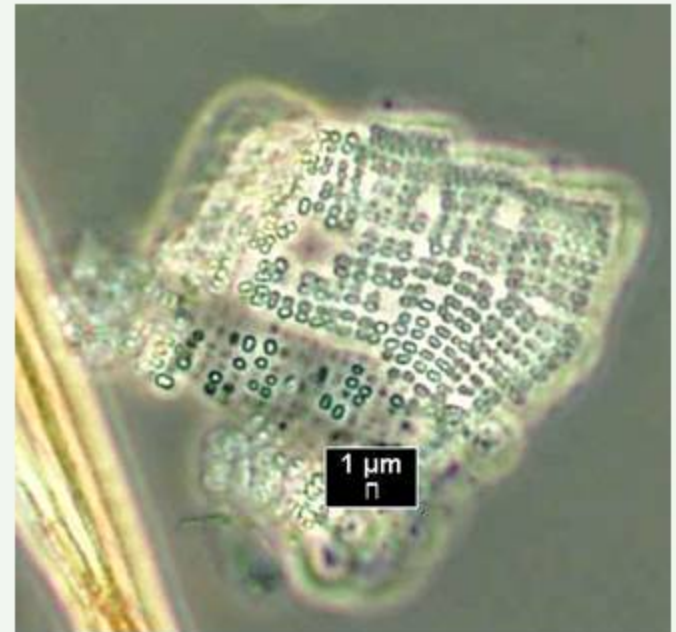
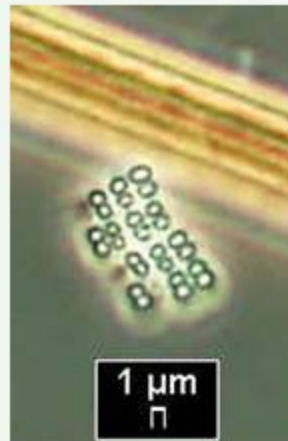
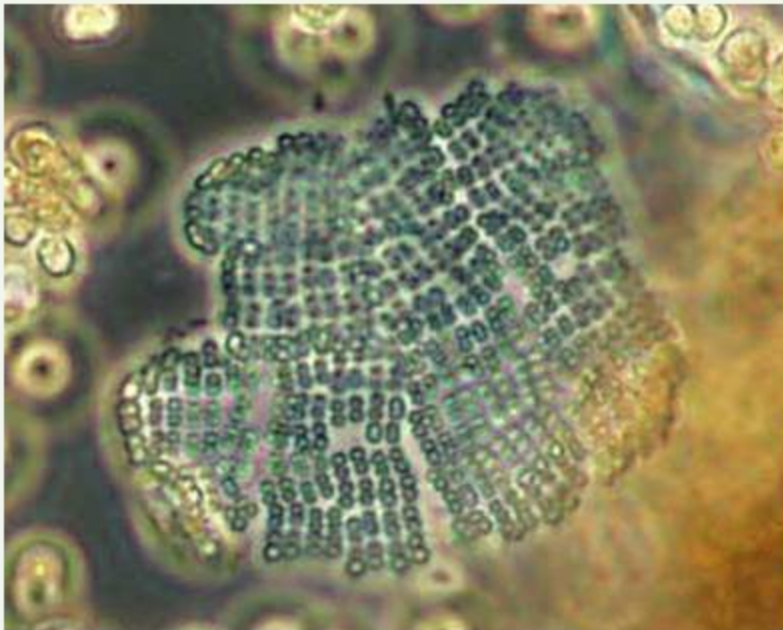


LM (Oder Bight)

phytoplankton - cyanophyceae

Merismopedia tenuissima

abundance: particularly in the warm season of the year
life-form: aggregation of subcolonies with (8) 16 (up to >100 cells)
cell diameter: 0,4 – 1,6 (2 – 2,5) μm

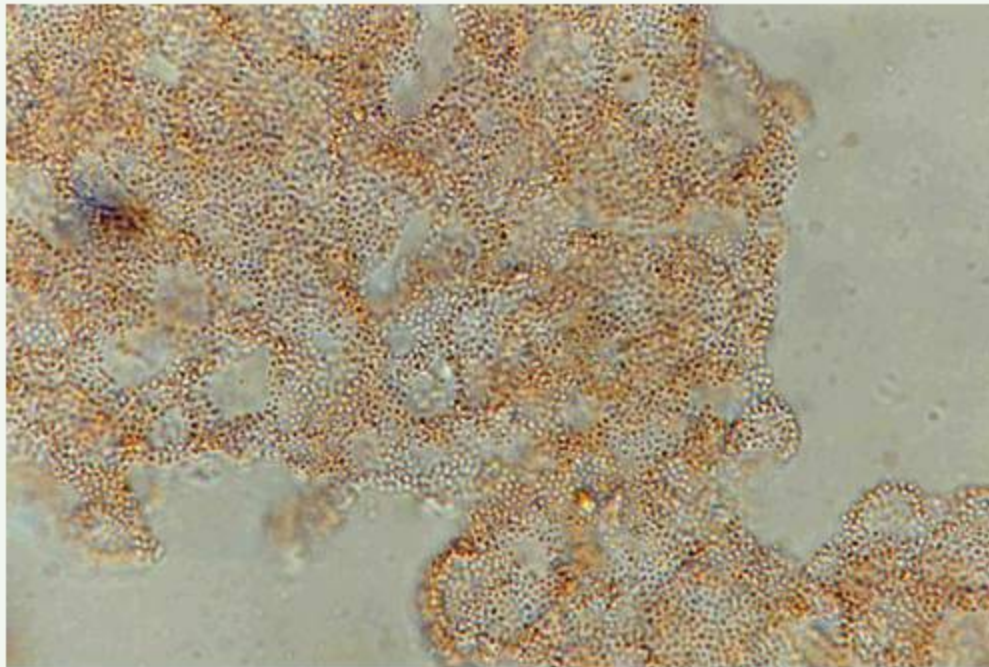


LM (Oder Bight)

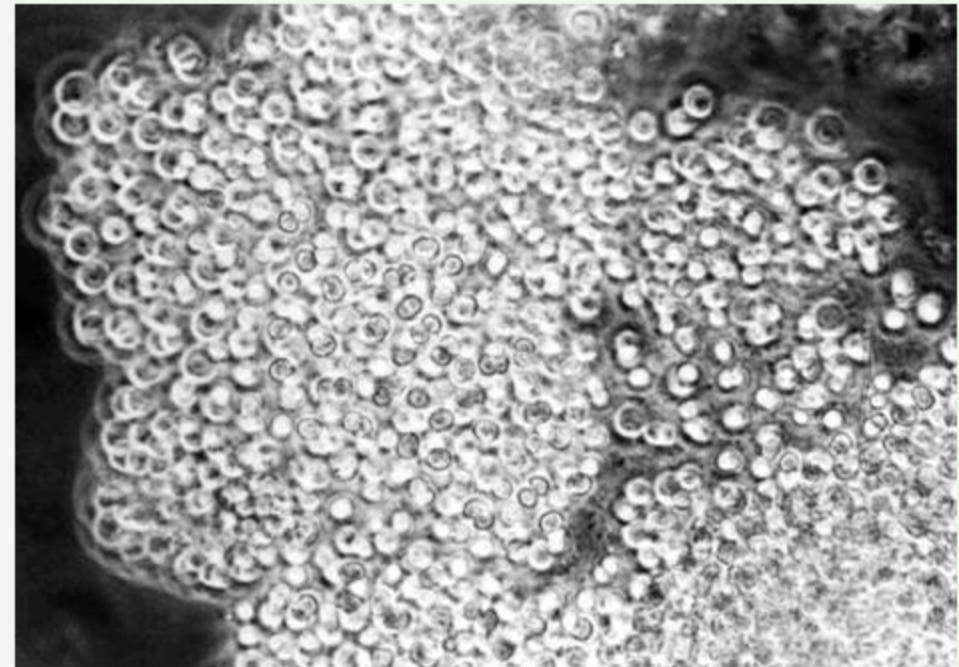
phytoplankton - cyanophyceae

Microcystis aeruginosa

abundance: summer, late summer
life-form: colonies
cell diameter: 6 μm



LM (Pomeranian Bight, during Oder flood)

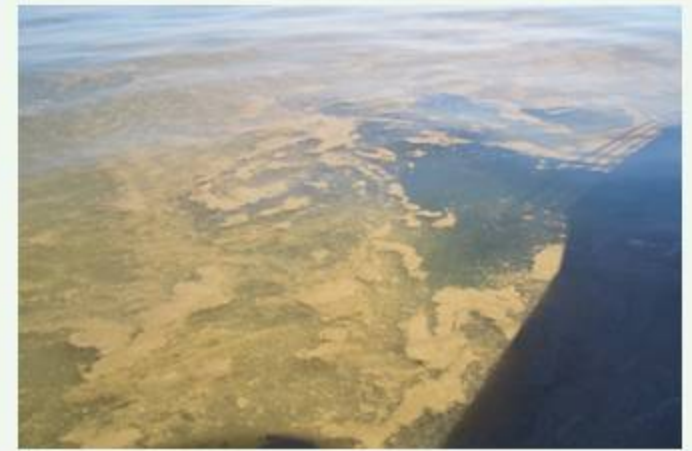


LM (Pomeranian Bight)

phytoplankton - cyanophyceae

Nodularia spumigena

abundance: summer, late summer
life-form: in long filaments
cell diameter: 8 - 12 μm



bloom of Nodularia Gotland Sea

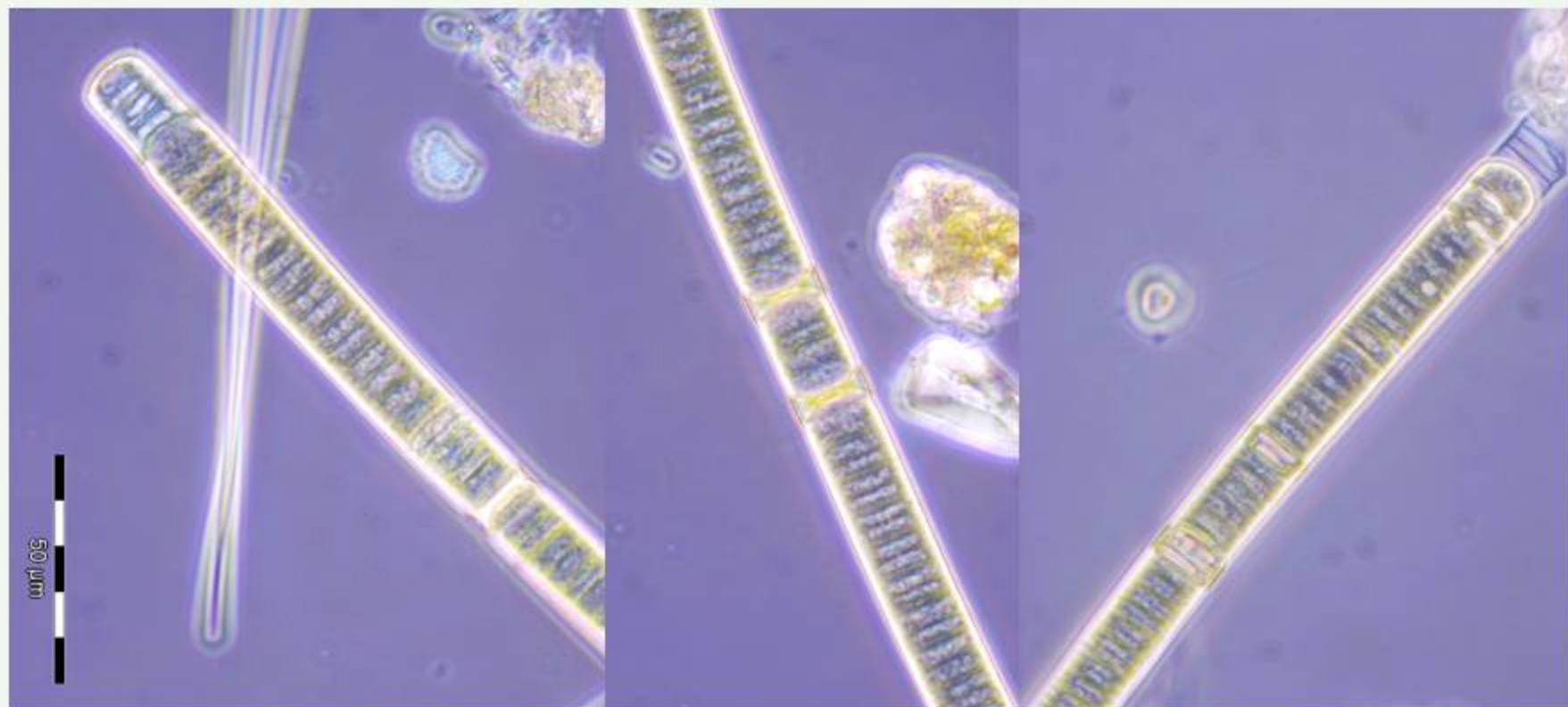


LM (Gotland Sea, sediment trap)

phytoplankton - cyanophyceae

Oscillatoria sp.

abundance: spring
life-form: in long filaments
cell diameter: 17 μ m (1 - 36 μ m)

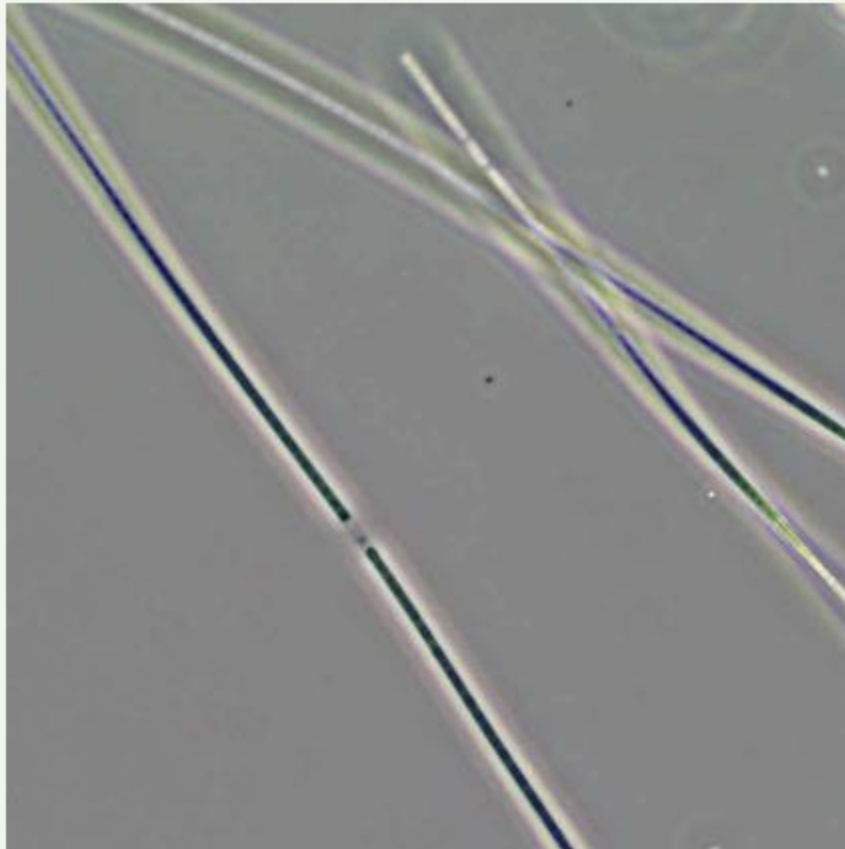


LM (coastal station Heiligendamm)

phytoplankton - cyanophyceae

Planktolyngbya limnetica

abundance: summer, late summer
life-form: in long filaments
cell diameter: 1,5 - 2 μm



LM (Gotland Sea, sediment trap)

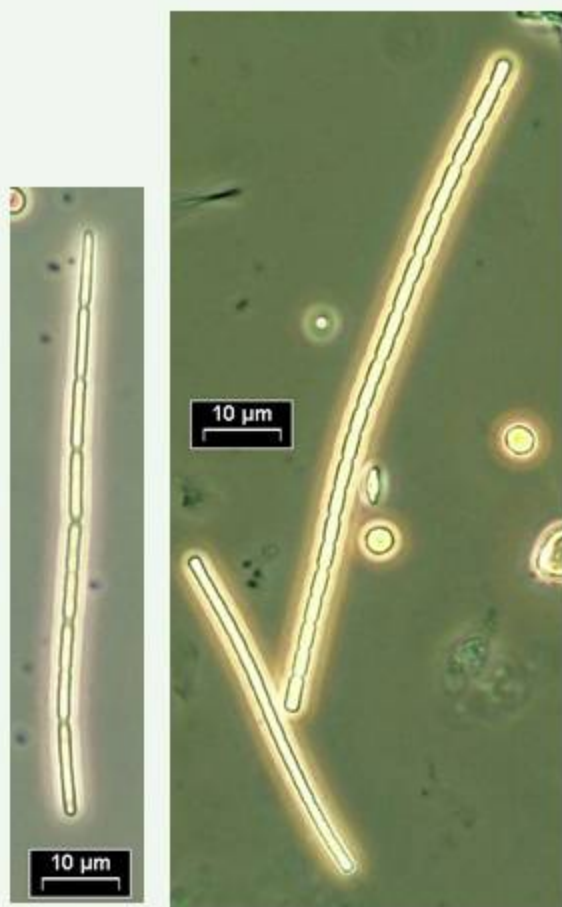


LM (Oder Bight)

phytoplankton – cyanophyceae

Pseudanabaena limnetica

abundance: summer, late summer
life-form: in filaments
cell size: 1 – 2 μm x 4 – 12 μm



LM (coastal station Heiligendamm)



LM (Oder Bight)

phytoplankton - cyanophyceae

Romeria sp.

abundance: mainly in summer
life-form: solitary, free-living, short trichomes
cell diameter: about 1 μm



LM (Pomeranian Bight)

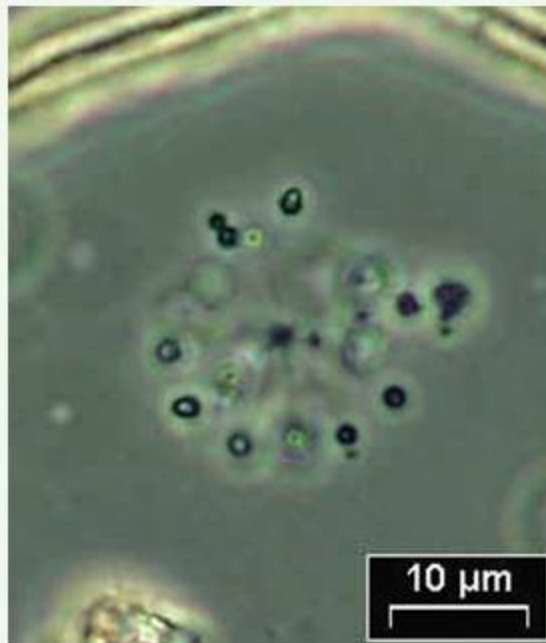


LM (Bornholm Sea)

phytoplankton - cyanophyceae

Snowella septentrionalis

abundance: spring, summer, autumn
life-form: in colonies up to 50µm in diameter
cell diameter: 1,2 – 3,4µm



LM (Oder Bight)

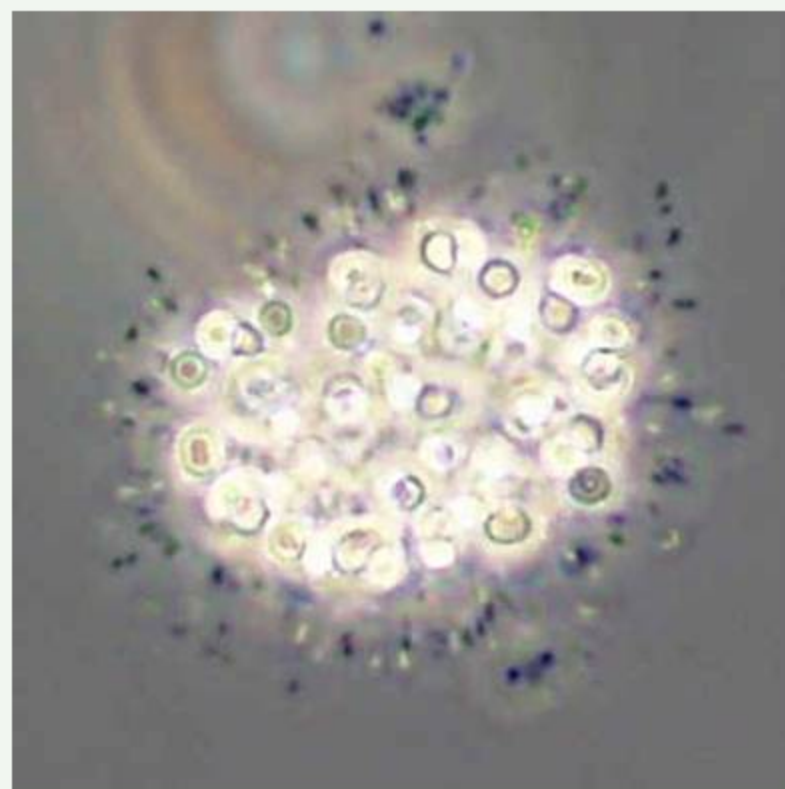
phytoplankton - cyanophyceae

Snowella sp.

abundance: summer, late summer

life-form: in colonies

cell size: 1,2 - 2,4 x 3,4 - 4 μm

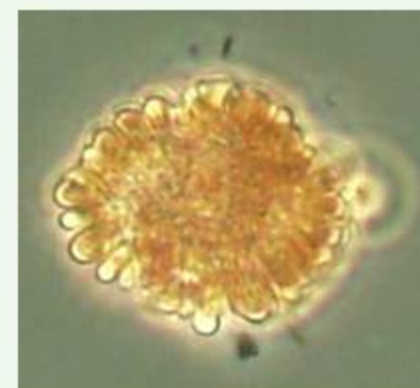
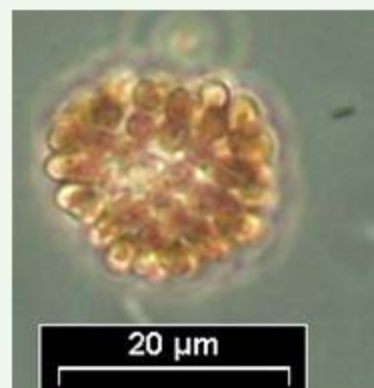
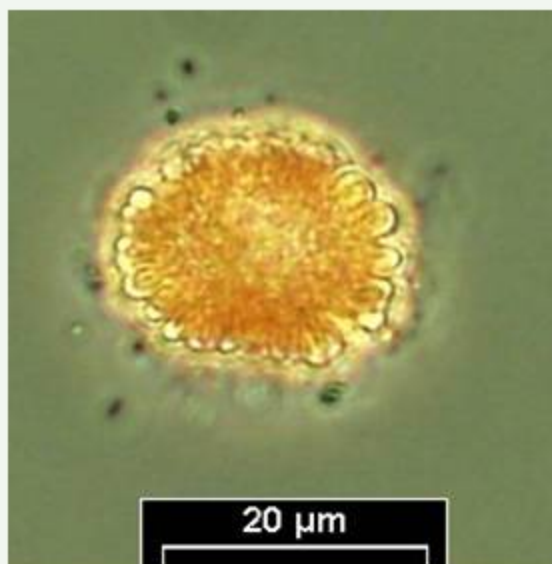


LM (Gotland Sea, sediment trap)

phytoplankton – cyanophyceae

Woronochinia compacta

abundance: spring, summer, autumn
life-form: in free-living colonies up to 80 μm in diameter
cell size: 3 - 6 μm x (1,5) - 3,5 μm



LM (Pomeranian Bight)